

CHEMICAL ANALYSIS TEST REPORT

Company : AMETHERM INC
 Address : 3111 North Deer Run Road #4, Carson City, Nv 89701, USA.
 Date Received : May 27, 2015
 Date Tested : Jun 02, 2015
 Tested Item : Pb、Cd、Hg、Cr⁶⁺、PBBs、PBDEs
 Method : IEC 62321
 Conclusion : Based on the performed tests on submitted samples, the results comply with the RoHS 2011/65/EU and its subsequent amendments.

TESTING LABORATORY IS ACCREDITED BY:

CNAS ISO/IEC 17025 certificate of independent test laboratory approval
 Certificate No. : CNAS L3100

WE HEREBY CERTIFY THAT:

The test(s) shown in the attachment were conducted according to the indicating procedures. We assume full responsibility for the accuracy and completeness of these tests and vouch for the qualifications of all personnel performing them.

	Name	Signature	Date
Engineer	Xiaohu Chen	<i>Xiaohu Chen</i>	2015.06.02
Reviewed	Ryback Chen	<i>Ryback Chen</i>	2015.06.02
Manger	Terry Cheng	<i>Terry Cheng</i>	2015.06.02

NOTE :

1. This report will be invalid if reproduced in part or altered in any way.
2. This report refers only to the specimen(s) submitted to test, and is invalid if used otherwise.
3. This report is ONLY valid with the examination seal and signature of this institute.
4. The tested specimen(s) will only be preserved for thirty days from the date issued, if not collected by the applicant.

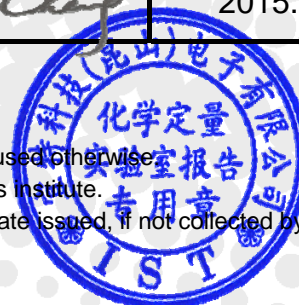




TABLE OF CONTENTS

1. GENERAL INFORMATION

1.1 DESCRIPTION OF SAMPLE 2

1.2 PHOTO OF SAMPLE..... 3

2. CHEMICAL ANALYSIS TEST

2.1 TEST CONDITION AND RESULTS..... 7

2.2 MEASUREMENT FLOW CHART 19

1. GENERAL INFORMATION

1.1 DESCRIPTION OF SAMPLE

Sample Name : PANH Family-metal、PANH Family-wire、STC Family、
KR Family、MS22 Family-pin、MS22 Family-body、
PANR Family- metal、PANR Family- wire、PANE Family- metal、
PANE Family- wire、PANT Family- metal、PANT Family- wire

Model No. : See Samples

Lot No. : ---




Material : ---


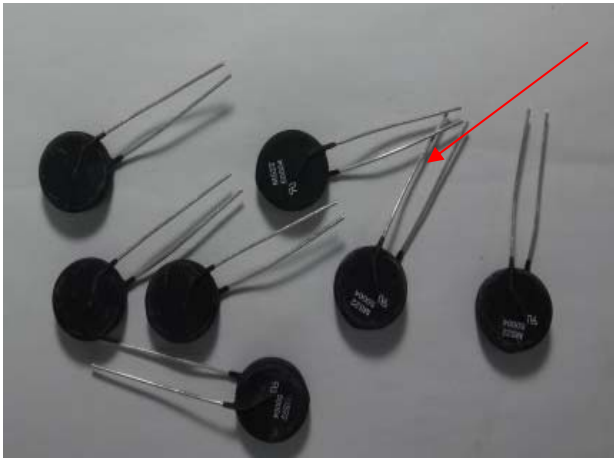
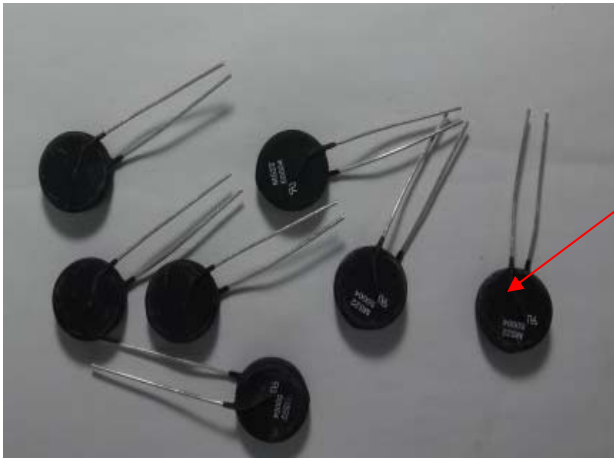
Main Substance : ---

Buyer : ---

Supplier : ---

1.2 PHOTO OF SAMPLE

Sample NO.	Description of test part	Photo
36	metal	
37	plastic	
38	plastic	

39	solid	
40	metal	
41	plastic	

42	metal	
43	plastic	
44	metal	

45	plastic	
46	metal	
47	plastic	

2.CHEMICAL ANALYSIS TEST

2.1 TEST CONDITIONS AND RESULTS

Sample No 36 : PANH Family-metal

Test Item(s)	Method	Instrument	Unit	MDL	Result	RoHS Limit (mg/kg)
Pb	IEC 62321	ICP-OES	mg/kg	2	N.D.	1000
Cd	IEC 62321	ICP-OES	mg/kg	2	N.D.	100
Hg	IEC 62321	ICP-OES	mg/kg	2	N.D.	1000
Cr ⁶⁺	IEC 62321	UV-Vis	mg/kg	2	N.D.	1000
PBBs(Bromobiphenyl)	IEC 62321	GC/MS	mg/kg	5	N.D.	---
PBBs(Dibromobiphenyl)	IEC 62321	GC/MS	mg/kg	5	N.D.	---
PBBs(Tribromobiphenyl)	IEC 62321	GC/MS	mg/kg	5	N.D.	---
PBBs(Tetrabromobiphenyl)	IEC 62321	GC/MS	mg/kg	5	N.D.	---
PBBs(Pentabromobiphenyl)	IEC 62321	GC/MS	mg/kg	5	N.D.	---
PBBs(Hexabromobiphenyl)	IEC 62321	GC/MS	mg/kg	5	N.D.	---
PBBs(Heptabromobiphenyl)	IEC 62321	GC/MS	mg/kg	5	N.D.	---
PBBs(Octabromobiphenyl)	IEC 62321	GC/MS	mg/kg	5	N.D.	---
PBBs(Nonabromobiphenyl)	IEC 62321	GC/MS	mg/kg	5	N.D.	---
PBBs(Decabromobiphenyl)	IEC 62321	GC/MS	mg/kg	5	N.D.	---
The above-mentioned total of (PBBs)	---	---	---	---	N.D.	1000
PBDEs(Monobromodiphenyl ether)	IEC 62321	GC/MS	mg/kg	5	N.D.	---
PBDEs(Dibromodiphenyl ether)	IEC 62321	GC/MS	mg/kg	5	N.D.	---
PBDEs(Tribromodiphenyl ether)	IEC 62321	GC/MS	mg/kg	5	N.D.	---
PBDEs(Tetrabromodiphenyl ether)	IEC 62321	GC/MS	mg/kg	5	N.D.	---
PBDEs(Pentabromodiphenyl ether)	IEC 62321	GC/MS	mg/kg	5	N.D.	---
PBDEs(Hexabromodiphenyl ether)	IEC 62321	GC/MS	mg/kg	5	N.D.	---
PBDEs(Heptabromodiphenyl ether)	IEC 62321	GC/MS	mg/kg	5	N.D.	---
PBDEs(Octabromodiphenyl ether)	IEC 62321	GC/MS	mg/kg	5	N.D.	---
PBDEs(Nonabromodiphenyl ether)	IEC 62321	GC/MS	mg/kg	5	N.D.	---
PBDEs(Decabromodiphenyl ether)	IEC 62321	GC/MS	mg/kg	5	N.D.	---
The above-mentioned total of (PBDEs)	---	---	---	---	N.D.	1000

Sample No 37 : PANH Family-wire

Test Item(s)	Method	Instrument	Unit	MDL	Result	RoHS Limit (mg/kg)
Pb	IEC 62321	ICP-OES	mg/kg	2	N.D.	1000
Cd	IEC 62321	ICP-OES	mg/kg	2	N.D.	100
Hg	IEC 62321	ICP-OES	mg/kg	2	N.D.	1000
Cr ⁶⁺	IEC 62321	UV-Vis	mg/kg	2	N.D.	1000
PBBs(Bromobiphenyl)	IEC 62321	GC/MS	mg/kg	5	N.D.	---
PBBs(Dibromobiphenyl)	IEC 62321	GC/MS	mg/kg	5	N.D.	---
PBBs(Tribromobiphenyl)	IEC 62321	GC/MS	mg/kg	5	N.D.	---
PBBs(Tetrabromobiphenyl)	IEC 62321	GC/MS	mg/kg	5	N.D.	---
PBBs(Pentabromobiphenyl)	IEC 62321	GC/MS	mg/kg	5	N.D.	---
PBBs(Hexabromobiphenyl)	IEC 62321	GC/MS	mg/kg	5	N.D.	---
PBBs(Heptabromobiphenyl)	IEC 62321	GC/MS	mg/kg	5	N.D.	---
PBBs(Octabromobiphenyl)	IEC 62321	GC/MS	mg/kg	5	N.D.	---
PBBs(Nonabromobiphenyl)	IEC 62321	GC/MS	mg/kg	5	N.D.	---
PBBs(Decabromobiphenyl)	IEC 62321	GC/MS	mg/kg	5	N.D.	---
The above-mentioned total of (PBBs)	---	---	---	---	N.D.	1000
PBDEs(Monobromodiphenyl ether)	IEC 62321	GC/MS	mg/kg	5	N.D.	---
PBDEs(Dibromodiphenyl ether)	IEC 62321	GC/MS	mg/kg	5	N.D.	---
PBDEs(Tribromodiphenyl ether)	IEC 62321	GC/MS	mg/kg	5	N.D.	---
PBDEs(Tetrabromodiphenyl ether)	IEC 62321	GC/MS	mg/kg	5	N.D.	---
PBDEs(Pentabromodiphenyl ether)	IEC 62321	GC/MS	mg/kg	5	N.D.	---
PBDEs(Hexabromodiphenyl ether)	IEC 62321	GC/MS	mg/kg	5	N.D.	---
PBDEs(Heptabromodiphenyl ether)	IEC 62321	GC/MS	mg/kg	5	N.D.	---
PBDEs(Octabromodiphenyl ether)	IEC 62321	GC/MS	mg/kg	5	N.D.	---
PBDEs(Nonabromodiphenyl ether)	IEC 62321	GC/MS	mg/kg	5	N.D.	---
PBDEs(Decabromodiphenyl ether)	IEC 62321	GC/MS	mg/kg	5	N.D.	---
The above-mentioned total of (PBDEs)	---	---	---	---	N.D.	1000

Sample No 38 : STC Family

Test Item(s)	Method	Instrument	Unit	MDL	Result	RoHS Limit (mg/kg)
Pb	IEC 62321	ICP-OES	mg/kg	2	N.D.	1000
Cd	IEC 62321	ICP-OES	mg/kg	2	N.D.	100
Hg	IEC 62321	ICP-OES	mg/kg	2	N.D.	1000
Cr ⁶⁺	IEC 62321	UV-Vis	mg/kg	2	N.D.	1000
PBBs(Bromobiphenyl)	IEC 62321	GC/MS	mg/kg	5	N.D.	---
PBBs(Dibromobiphenyl)	IEC 62321	GC/MS	mg/kg	5	N.D.	---
PBBs(Tribromobiphenyl)	IEC 62321	GC/MS	mg/kg	5	N.D.	---
PBBs(Tetrabromobiphenyl)	IEC 62321	GC/MS	mg/kg	5	N.D.	---
PBBs(Pentabromobiphenyl)	IEC 62321	GC/MS	mg/kg	5	N.D.	---
PBBs(Hexabromobiphenyl)	IEC 62321	GC/MS	mg/kg	5	N.D.	---
PBBs(Heptabromobiphenyl)	IEC 62321	GC/MS	mg/kg	5	N.D.	---
PBBs(Octabromobiphenyl)	IEC 62321	GC/MS	mg/kg	5	N.D.	---
PBBs(Nonabromobiphenyl)	IEC 62321	GC/MS	mg/kg	5	N.D.	---
PBBs(Decabromobiphenyl)	IEC 62321	GC/MS	mg/kg	5	N.D.	---
The above-mentioned total of (PBBs)	---	---	---	---	N.D.	1000
PBDEs(Monobromodiphenyl ether)	IEC 62321	GC/MS	mg/kg	5	N.D.	---
PBDEs(Dibromodiphenyl ether)	IEC 62321	GC/MS	mg/kg	5	N.D.	---
PBDEs(Tribromodiphenyl ether)	IEC 62321	GC/MS	mg/kg	5	N.D.	---
PBDEs(Tetrabromodiphenyl ether)	IEC 62321	GC/MS	mg/kg	5	N.D.	---
PBDEs(Pentabromodiphenyl ether)	IEC 62321	GC/MS	mg/kg	5	N.D.	---
PBDEs(Hexabromodiphenyl ether)	IEC 62321	GC/MS	mg/kg	5	N.D.	---
PBDEs(Heptabromodiphenyl ether)	IEC 62321	GC/MS	mg/kg	5	N.D.	---
PBDEs(Octabromodiphenyl ether)	IEC 62321	GC/MS	mg/kg	5	N.D.	---
PBDEs(Nonabromodiphenyl ether)	IEC 62321	GC/MS	mg/kg	5	N.D.	---
PBDEs(Decabromodiphenyl ether)	IEC 62321	GC/MS	mg/kg	5	N.D.	---
The above-mentioned total of (PBDEs)	---	---	---	---	N.D.	1000

Sample No 39 : KR Family

Test Item(s)	Method	Instrument	Unit	MDL	Result	RoHS Limit (mg/kg)
Pb	IEC 62321	ICP-OES	mg/kg	2	N.D.	1000
Cd	IEC 62321	ICP-OES	mg/kg	2	N.D.	100
Hg	IEC 62321	ICP-OES	mg/kg	2	N.D.	1000
Cr ⁶⁺	IEC 62321	UV-Vis	mg/kg	2	N.D.	1000
PBBs(Bromobiphenyl)	IEC 62321	GC/MS	mg/kg	5	N.D.	---
PBBs(Dibromobiphenyl)	IEC 62321	GC/MS	mg/kg	5	N.D.	---
PBBs(Tribromobiphenyl)	IEC 62321	GC/MS	mg/kg	5	N.D.	---
PBBs(Tetrabromobiphenyl)	IEC 62321	GC/MS	mg/kg	5	N.D.	---
PBBs(Pentabromobiphenyl)	IEC 62321	GC/MS	mg/kg	5	N.D.	---
PBBs(Hexabromobiphenyl)	IEC 62321	GC/MS	mg/kg	5	N.D.	---
PBBs(Heptabromobiphenyl)	IEC 62321	GC/MS	mg/kg	5	N.D.	---
PBBs(Octabromobiphenyl)	IEC 62321	GC/MS	mg/kg	5	N.D.	---
PBBs(Nonabromobiphenyl)	IEC 62321	GC/MS	mg/kg	5	N.D.	---
PBBs(Decabromobiphenyl)	IEC 62321	GC/MS	mg/kg	5	N.D.	---
The above-mentioned total of (PBBs)	---	---	---	---	N.D.	1000
PBDEs(Monobromodiphenyl ether)	IEC 62321	GC/MS	mg/kg	5	N.D.	---
PBDEs(Dibromodiphenyl ether)	IEC 62321	GC/MS	mg/kg	5	N.D.	---
PBDEs(Tribromodiphenyl ether)	IEC 62321	GC/MS	mg/kg	5	N.D.	---
PBDEs(Tetrabromodiphenyl ether)	IEC 62321	GC/MS	mg/kg	5	N.D.	---
PBDEs(Pentabromodiphenyl ether)	IEC 62321	GC/MS	mg/kg	5	N.D.	---
PBDEs(Hexabromodiphenyl ether)	IEC 62321	GC/MS	mg/kg	5	N.D.	---
PBDEs(Heptabromodiphenyl ether)	IEC 62321	GC/MS	mg/kg	5	N.D.	---
PBDEs(Octabromodiphenyl ether)	IEC 62321	GC/MS	mg/kg	5	N.D.	---
PBDEs(Nonabromodiphenyl ether)	IEC 62321	GC/MS	mg/kg	5	N.D.	---
PBDEs(Decabromodiphenyl ether)	IEC 62321	GC/MS	mg/kg	5	N.D.	---
The above-mentioned total of (PBDEs)	---	---	---	---	N.D.	1000

Sample No 40 : MS22 Family-pin

Test Item(s)	Method	Instrument	Unit	MDL	Result	RoHS Limit (mg/kg)
Pb	IEC 62321	ICP-OES	mg/kg	2	N.D.	1000
Cd	IEC 62321	ICP-OES	mg/kg	2	N.D.	100
Hg	IEC 62321	ICP-OES	mg/kg	2	N.D.	1000
Cr ⁶⁺	IEC 62321	UV-Vis	mg/kg	2	N.D.	1000
PBBs(Bromobiphenyl)	IEC 62321	GC/MS	mg/kg	5	N.D.	---
PBBs(Dibromobiphenyl)	IEC 62321	GC/MS	mg/kg	5	N.D.	---
PBBs(Tribromobiphenyl)	IEC 62321	GC/MS	mg/kg	5	N.D.	---
PBBs(Tetrabromobiphenyl)	IEC 62321	GC/MS	mg/kg	5	N.D.	---
PBBs(Pentabromobiphenyl)	IEC 62321	GC/MS	mg/kg	5	N.D.	---
PBBs(Hexabromobiphenyl)	IEC 62321	GC/MS	mg/kg	5	N.D.	---
PBBs(Heptabromobiphenyl)	IEC 62321	GC/MS	mg/kg	5	N.D.	---
PBBs(Octabromobiphenyl)	IEC 62321	GC/MS	mg/kg	5	N.D.	---
PBBs(Nonabromobiphenyl)	IEC 62321	GC/MS	mg/kg	5	N.D.	---
PBBs(Decabromobiphenyl)	IEC 62321	GC/MS	mg/kg	5	N.D.	---
The above-mentioned total of (PBBs)	---	---	---	---	N.D.	1000
PBDEs(Monobromodiphenyl ether)	IEC 62321	GC/MS	mg/kg	5	N.D.	---
PBDEs(Dibromodiphenyl ether)	IEC 62321	GC/MS	mg/kg	5	N.D.	---
PBDEs(Tribromodiphenyl ether)	IEC 62321	GC/MS	mg/kg	5	N.D.	---
PBDEs(Tetrabromodiphenyl ether)	IEC 62321	GC/MS	mg/kg	5	N.D.	---
PBDEs(Pentabromodiphenyl ether)	IEC 62321	GC/MS	mg/kg	5	N.D.	---
PBDEs(Hexabromodiphenyl ether)	IEC 62321	GC/MS	mg/kg	5	N.D.	---
PBDEs(Heptabromodiphenyl ether)	IEC 62321	GC/MS	mg/kg	5	N.D.	---
PBDEs(Octabromodiphenyl ether)	IEC 62321	GC/MS	mg/kg	5	N.D.	---
PBDEs(Nonabromodiphenyl ether)	IEC 62321	GC/MS	mg/kg	5	N.D.	---
PBDEs(Decabromodiphenyl ether)	IEC 62321	GC/MS	mg/kg	5	N.D.	---
The above-mentioned total of (PBDEs)	---	---	---	---	N.D.	1000

Sample No 41 : MS22 Family-body

Test Item(s)	Method	Instrument	Unit	MDL	Result	RoHS Limit (mg/kg)
Pb	IEC 62321	ICP-OES	mg/kg	2	341	1000
Cd	IEC 62321	ICP-OES	mg/kg	2	N.D.	100
Hg	IEC 62321	ICP-OES	mg/kg	2	N.D.	1000
Cr ⁶⁺	IEC 62321	UV-Vis	mg/kg	2	N.D.	1000
PBBs(Bromobiphenyl)	IEC 62321	GC/MS	mg/kg	5	N.D.	---
PBBs(Dibromobiphenyl)	IEC 62321	GC/MS	mg/kg	5	N.D.	---
PBBs(Tribromobiphenyl)	IEC 62321	GC/MS	mg/kg	5	N.D.	---
PBBs(Tetrabromobiphenyl)	IEC 62321	GC/MS	mg/kg	5	N.D.	---
PBBs(Pentabromobiphenyl)	IEC 62321	GC/MS	mg/kg	5	N.D.	---
PBBs(Hexabromobiphenyl)	IEC 62321	GC/MS	mg/kg	5	N.D.	---
PBBs(Heptabromobiphenyl)	IEC 62321	GC/MS	mg/kg	5	N.D.	---
PBBs(Octabromobiphenyl)	IEC 62321	GC/MS	mg/kg	5	N.D.	---
PBBs(Nonabromobiphenyl)	IEC 62321	GC/MS	mg/kg	5	N.D.	---
PBBs(Decabromobiphenyl)	IEC 62321	GC/MS	mg/kg	5	N.D.	---
The above-mentioned total of (PBBs)	---	---	---	---	N.D.	1000
PBDEs(Monobromodiphenyl ether)	IEC 62321	GC/MS	mg/kg	5	N.D.	---
PBDEs(Dibromodiphenyl ether)	IEC 62321	GC/MS	mg/kg	5	N.D.	---
PBDEs(Tribromodiphenyl ether)	IEC 62321	GC/MS	mg/kg	5	N.D.	---
PBDEs(Tetrabromodiphenyl ether)	IEC 62321	GC/MS	mg/kg	5	N.D.	---
PBDEs(Pentabromodiphenyl ether)	IEC 62321	GC/MS	mg/kg	5	N.D.	---
PBDEs(Hexabromodiphenyl ether)	IEC 62321	GC/MS	mg/kg	5	N.D.	---
PBDEs(Heptabromodiphenyl ether)	IEC 62321	GC/MS	mg/kg	5	N.D.	---
PBDEs(Octabromodiphenyl ether)	IEC 62321	GC/MS	mg/kg	5	N.D.	---
PBDEs(Nonabromodiphenyl ether)	IEC 62321	GC/MS	mg/kg	5	N.D.	---
PBDEs(Decabromodiphenyl ether)	IEC 62321	GC/MS	mg/kg	5	N.D.	---
The above-mentioned total of (PBDEs)	---	---	---	---	N.D.	1000

Sample No 42 : PANR Family- metal

Test Item(s)	Method	Instrument	Unit	MDL	Result	RoHS Limit (mg/kg)
Pb	IEC 62321	ICP-OES	mg/kg	2	N.D.	1000
Cd	IEC 62321	ICP-OES	mg/kg	2	N.D.	100
Hg	IEC 62321	ICP-OES	mg/kg	2	N.D.	1000
Cr ⁶⁺	IEC 62321	UV-Vis	mg/kg	2	N.D.	1000
PBBs(Bromobiphenyl)	IEC 62321	GC/MS	mg/kg	5	N.D.	---
PBBs(Dibromobiphenyl)	IEC 62321	GC/MS	mg/kg	5	N.D.	---
PBBs(Tribromobiphenyl)	IEC 62321	GC/MS	mg/kg	5	N.D.	---
PBBs(Tetrabromobiphenyl)	IEC 62321	GC/MS	mg/kg	5	N.D.	---
PBBs(Pentabromobiphenyl)	IEC 62321	GC/MS	mg/kg	5	N.D.	---
PBBs(Hexabromobiphenyl)	IEC 62321	GC/MS	mg/kg	5	N.D.	---
PBBs(Heptabromobiphenyl)	IEC 62321	GC/MS	mg/kg	5	N.D.	---
PBBs(Octabromobiphenyl)	IEC 62321	GC/MS	mg/kg	5	N.D.	---
PBBs(Nonabromobiphenyl)	IEC 62321	GC/MS	mg/kg	5	N.D.	---
PBBs(Decabromobiphenyl)	IEC 62321	GC/MS	mg/kg	5	N.D.	---
The above-mentioned total of (PBBs)	---	---	---	---	N.D.	1000
PBDEs(Monobromodiphenyl ether)	IEC 62321	GC/MS	mg/kg	5	N.D.	---
PBDEs(Dibromodiphenyl ether)	IEC 62321	GC/MS	mg/kg	5	N.D.	---
PBDEs(Tribromodiphenyl ether)	IEC 62321	GC/MS	mg/kg	5	N.D.	---
PBDEs(Tetrabromodiphenyl ether)	IEC 62321	GC/MS	mg/kg	5	N.D.	---
PBDEs(Pentabromodiphenyl ether)	IEC 62321	GC/MS	mg/kg	5	N.D.	---
PBDEs(Hexabromodiphenyl ether)	IEC 62321	GC/MS	mg/kg	5	N.D.	---
PBDEs(Heptabromodiphenyl ether)	IEC 62321	GC/MS	mg/kg	5	N.D.	---
PBDEs(Octabromodiphenyl ether)	IEC 62321	GC/MS	mg/kg	5	N.D.	---
PBDEs(Nonabromodiphenyl ether)	IEC 62321	GC/MS	mg/kg	5	N.D.	---
PBDEs(Decabromodiphenyl ether)	IEC 62321	GC/MS	mg/kg	5	N.D.	---
The above-mentioned total of (PBDEs)	---	---	---	---	N.D.	1000

Sample No 43 : PANR Family-wire

Test Item(s)	Method	Instrument	Unit	MDL	Result	RoHS Limit (mg/kg)
Pb	IEC 62321	ICP-OES	mg/kg	2	N.D.	1000
Cd	IEC 62321	ICP-OES	mg/kg	2	N.D.	100
Hg	IEC 62321	ICP-OES	mg/kg	2	N.D.	1000
Cr ⁶⁺	IEC 62321	UV-Vis	mg/kg	2	N.D.	1000
PBBs(Bromobiphenyl)	IEC 62321	GC/MS	mg/kg	5	N.D.	---
PBBs(Dibromobiphenyl)	IEC 62321	GC/MS	mg/kg	5	N.D.	---
PBBs(Tribromobiphenyl)	IEC 62321	GC/MS	mg/kg	5	N.D.	---
PBBs(Tetrabromobiphenyl)	IEC 62321	GC/MS	mg/kg	5	N.D.	---
PBBs(Pentabromobiphenyl)	IEC 62321	GC/MS	mg/kg	5	N.D.	---
PBBs(Hexabromobiphenyl)	IEC 62321	GC/MS	mg/kg	5	N.D.	---
PBBs(Heptabromobiphenyl)	IEC 62321	GC/MS	mg/kg	5	N.D.	---
PBBs(Octabromobiphenyl)	IEC 62321	GC/MS	mg/kg	5	N.D.	---
PBBs(Nonabromobiphenyl)	IEC 62321	GC/MS	mg/kg	5	N.D.	---
PBBs(Decabromobiphenyl)	IEC 62321	GC/MS	mg/kg	5	N.D.	---
The above-mentioned total of (PBBs)	---	---	---	---	N.D.	1000
PBDEs(Monobromodiphenyl ether)	IEC 62321	GC/MS	mg/kg	5	N.D.	---
PBDEs(Dibromodiphenyl ether)	IEC 62321	GC/MS	mg/kg	5	N.D.	---
PBDEs(Tribromodiphenyl ether)	IEC 62321	GC/MS	mg/kg	5	N.D.	---
PBDEs(Tetrabromodiphenyl ether)	IEC 62321	GC/MS	mg/kg	5	N.D.	---
PBDEs(Pentabromodiphenyl ether)	IEC 62321	GC/MS	mg/kg	5	N.D.	---
PBDEs(Hexabromodiphenyl ether)	IEC 62321	GC/MS	mg/kg	5	N.D.	---
PBDEs(Heptabromodiphenyl ether)	IEC 62321	GC/MS	mg/kg	5	N.D.	---
PBDEs(Octabromodiphenyl ether)	IEC 62321	GC/MS	mg/kg	5	N.D.	---
PBDEs(Nonabromodiphenyl ether)	IEC 62321	GC/MS	mg/kg	5	N.D.	---
PBDEs(Decabromodiphenyl ether)	IEC 62321	GC/MS	mg/kg	5	N.D.	---
The above-mentioned total of (PBDEs)	---	---	---	---	N.D.	1000

Sample No 44 : PANE Family- metal

Test Item(s)	Method	Instrument	Unit	MDL	Result	RoHS Limit (mg/kg)
Pb	IEC 62321	ICP-OES	mg/kg	2	N.D.	1000
Cd	IEC 62321	ICP-OES	mg/kg	2	N.D.	100
Hg	IEC 62321	ICP-OES	mg/kg	2	N.D.	1000
Cr ⁶⁺	IEC 62321	UV-Vis	mg/kg	2	N.D.	1000
PBBs(Bromobiphenyl)	IEC 62321	GC/MS	mg/kg	5	N.D.	---
PBBs(Dibromobiphenyl)	IEC 62321	GC/MS	mg/kg	5	N.D.	---
PBBs(Tribromobiphenyl)	IEC 62321	GC/MS	mg/kg	5	N.D.	---
PBBs(Tetrabromobiphenyl)	IEC 62321	GC/MS	mg/kg	5	N.D.	---
PBBs(Pentabromobiphenyl)	IEC 62321	GC/MS	mg/kg	5	N.D.	---
PBBs(Hexabromobiphenyl)	IEC 62321	GC/MS	mg/kg	5	N.D.	---
PBBs(Heptabromobiphenyl)	IEC 62321	GC/MS	mg/kg	5	N.D.	---
PBBs(Octabromobiphenyl)	IEC 62321	GC/MS	mg/kg	5	N.D.	---
PBBs(Nonabromobiphenyl)	IEC 62321	GC/MS	mg/kg	5	N.D.	---
PBBs(Decabromobiphenyl)	IEC 62321	GC/MS	mg/kg	5	N.D.	---
The above-mentioned total of (PBBs)	---	---	---	---	N.D.	1000
PBDEs(Monobromodiphenyl ether)	IEC 62321	GC/MS	mg/kg	5	N.D.	---
PBDEs(Dibromodiphenyl ether)	IEC 62321	GC/MS	mg/kg	5	N.D.	---
PBDEs(Tribromodiphenyl ether)	IEC 62321	GC/MS	mg/kg	5	N.D.	---
PBDEs(Tetrabromodiphenyl ether)	IEC 62321	GC/MS	mg/kg	5	N.D.	---
PBDEs(Pentabromodiphenyl ether)	IEC 62321	GC/MS	mg/kg	5	N.D.	---
PBDEs(Hexabromodiphenyl ether)	IEC 62321	GC/MS	mg/kg	5	N.D.	---
PBDEs(Heptabromodiphenyl ether)	IEC 62321	GC/MS	mg/kg	5	N.D.	---
PBDEs(Octabromodiphenyl ether)	IEC 62321	GC/MS	mg/kg	5	N.D.	---
PBDEs(Nonabromodiphenyl ether)	IEC 62321	GC/MS	mg/kg	5	N.D.	---
PBDEs(Decabromodiphenyl ether)	IEC 62321	GC/MS	mg/kg	5	N.D.	---
The above-mentioned total of (PBDEs)	---	---	---	---	N.D.	1000

Sample No 45 : PANE Family-wire

Test Item(s)	Method	Instrument	Unit	MDL	Result	RoHS Limit (mg/kg)
Pb	IEC 62321	ICP-OES	mg/kg	2	N.D.	1000
Cd	IEC 62321	ICP-OES	mg/kg	2	N.D.	100
Hg	IEC 62321	ICP-OES	mg/kg	2	N.D.	1000
Cr ⁶⁺	IEC 62321	UV-Vis	mg/kg	2	N.D.	1000
PBBs(Bromobiphenyl)	IEC 62321	GC/MS	mg/kg	5	N.D.	---
PBBs(Dibromobiphenyl)	IEC 62321	GC/MS	mg/kg	5	N.D.	---
PBBs(Tribromobiphenyl)	IEC 62321	GC/MS	mg/kg	5	N.D.	---
PBBs(Tetrabromobiphenyl)	IEC 62321	GC/MS	mg/kg	5	N.D.	---
PBBs(Pentabromobiphenyl)	IEC 62321	GC/MS	mg/kg	5	N.D.	---
PBBs(Hexabromobiphenyl)	IEC 62321	GC/MS	mg/kg	5	N.D.	---
PBBs(Heptabromobiphenyl)	IEC 62321	GC/MS	mg/kg	5	N.D.	---
PBBs(Octabromobiphenyl)	IEC 62321	GC/MS	mg/kg	5	N.D.	---
PBBs(Nonabromobiphenyl)	IEC 62321	GC/MS	mg/kg	5	N.D.	---
PBBs(Decabromobiphenyl)	IEC 62321	GC/MS	mg/kg	5	N.D.	---
The above-mentioned total of (PBBs)	---	---	---	---	N.D.	1000
PBDEs(Monobromodiphenyl ether)	IEC 62321	GC/MS	mg/kg	5	N.D.	---
PBDEs(Dibromodiphenyl ether)	IEC 62321	GC/MS	mg/kg	5	N.D.	---
PBDEs(Tribromodiphenyl ether)	IEC 62321	GC/MS	mg/kg	5	N.D.	---
PBDEs(Tetrabromodiphenyl ether)	IEC 62321	GC/MS	mg/kg	5	N.D.	---
PBDEs(Pentabromodiphenyl ether)	IEC 62321	GC/MS	mg/kg	5	N.D.	---
PBDEs(Hexabromodiphenyl ether)	IEC 62321	GC/MS	mg/kg	5	N.D.	---
PBDEs(Heptabromodiphenyl ether)	IEC 62321	GC/MS	mg/kg	5	N.D.	---
PBDEs(Octabromodiphenyl ether)	IEC 62321	GC/MS	mg/kg	5	N.D.	---
PBDEs(Nonabromodiphenyl ether)	IEC 62321	GC/MS	mg/kg	5	N.D.	---
PBDEs(Decabromodiphenyl ether)	IEC 62321	GC/MS	mg/kg	5	N.D.	---
The above-mentioned total of (PBDEs)	---	---	---	---	N.D.	1000

Sample No 46 : PANT Family- metal

Test Item(s)	Method	Instrument	Unit	MDL	Result	RoHS Limit (mg/kg)
Pb	IEC 62321	ICP-OES	mg/kg	2	N.D.	1000
Cd	IEC 62321	ICP-OES	mg/kg	2	N.D.	100
Hg	IEC 62321	ICP-OES	mg/kg	2	N.D.	1000
Cr ⁶⁺	IEC 62321	UV-Vis	mg/kg	2	N.D.	1000
PBBs(Bromobiphenyl)	IEC 62321	GC/MS	mg/kg	5	N.D.	---
PBBs(Dibromobiphenyl)	IEC 62321	GC/MS	mg/kg	5	N.D.	---
PBBs(Tribromobiphenyl)	IEC 62321	GC/MS	mg/kg	5	N.D.	---
PBBs(Tetrabromobiphenyl)	IEC 62321	GC/MS	mg/kg	5	N.D.	---
PBBs(Pentabromobiphenyl)	IEC 62321	GC/MS	mg/kg	5	N.D.	---
PBBs(Hexabromobiphenyl)	IEC 62321	GC/MS	mg/kg	5	N.D.	---
PBBs(Heptabromobiphenyl)	IEC 62321	GC/MS	mg/kg	5	N.D.	---
PBBs(Octabromobiphenyl)	IEC 62321	GC/MS	mg/kg	5	N.D.	---
PBBs(Nonabromobiphenyl)	IEC 62321	GC/MS	mg/kg	5	N.D.	---
PBBs(Decabromobiphenyl)	IEC 62321	GC/MS	mg/kg	5	N.D.	---
The above-mentioned total of (PBBs)	---	---	---	---	N.D.	1000
PBDEs(Monobromodiphenyl ether)	IEC 62321	GC/MS	mg/kg	5	N.D.	---
PBDEs(Dibromodiphenyl ether)	IEC 62321	GC/MS	mg/kg	5	N.D.	---
PBDEs(Tribromodiphenyl ether)	IEC 62321	GC/MS	mg/kg	5	N.D.	---
PBDEs(Tetrabromodiphenyl ether)	IEC 62321	GC/MS	mg/kg	5	N.D.	---
PBDEs(Pentabromodiphenyl ether)	IEC 62321	GC/MS	mg/kg	5	N.D.	---
PBDEs(Hexabromodiphenyl ether)	IEC 62321	GC/MS	mg/kg	5	N.D.	---
PBDEs(Heptabromodiphenyl ether)	IEC 62321	GC/MS	mg/kg	5	N.D.	---
PBDEs(Octabromodiphenyl ether)	IEC 62321	GC/MS	mg/kg	5	N.D.	---
PBDEs(Nonabromodiphenyl ether)	IEC 62321	GC/MS	mg/kg	5	N.D.	---
PBDEs(Decabromodiphenyl ether)	IEC 62321	GC/MS	mg/kg	5	N.D.	---
The above-mentioned total of (PBDEs)	---	---	---	---	N.D.	1000

Sample No 47 : PANT Family-wire

Test Item(s)	Method	Instrument	Unit	MDL	Result	RoHS Limit (mg/kg)
Pb	IEC 62321	ICP-OES	mg/kg	2	N.D.	1000
Cd	IEC 62321	ICP-OES	mg/kg	2	N.D.	100
Hg	IEC 62321	ICP-OES	mg/kg	2	N.D.	1000
Cr ⁶⁺	IEC 62321	UV-Vis	mg/kg	2	N.D.	1000
PBBs(Bromobiphenyl)	IEC 62321	GC/MS	mg/kg	5	N.D.	---
PBBs(Dibromobiphenyl)	IEC 62321	GC/MS	mg/kg	5	N.D.	---
PBBs(Tribromobiphenyl)	IEC 62321	GC/MS	mg/kg	5	N.D.	---
PBBs(Tetrabromobiphenyl)	IEC 62321	GC/MS	mg/kg	5	N.D.	---
PBBs(Pentabromobiphenyl)	IEC 62321	GC/MS	mg/kg	5	N.D.	---
PBBs(Hexabromobiphenyl)	IEC 62321	GC/MS	mg/kg	5	N.D.	---
PBBs(Heptabromobiphenyl)	IEC 62321	GC/MS	mg/kg	5	N.D.	---
PBBs(Octabromobiphenyl)	IEC 62321	GC/MS	mg/kg	5	N.D.	---
PBBs(Nonabromobiphenyl)	IEC 62321	GC/MS	mg/kg	5	N.D.	---
PBBs(Decabromobiphenyl)	IEC 62321	GC/MS	mg/kg	5	N.D.	---
The above-mentioned total of (PBBs)	---	---	---	---	N.D.	1000
PBDEs(Monobromodiphenyl ether)	IEC 62321	GC/MS	mg/kg	5	N.D.	---
PBDEs(Dibromodiphenyl ether)	IEC 62321	GC/MS	mg/kg	5	N.D.	---
PBDEs(Tribromodiphenyl ether)	IEC 62321	GC/MS	mg/kg	5	N.D.	---
PBDEs(Tetrabromodiphenyl ether)	IEC 62321	GC/MS	mg/kg	5	N.D.	---
PBDEs(Pentabromodiphenyl ether)	IEC 62321	GC/MS	mg/kg	5	N.D.	---
PBDEs(Hexabromodiphenyl ether)	IEC 62321	GC/MS	mg/kg	5	N.D.	---
PBDEs(Heptabromodiphenyl ether)	IEC 62321	GC/MS	mg/kg	5	N.D.	---
PBDEs(Octabromodiphenyl ether)	IEC 62321	GC/MS	mg/kg	5	N.D.	---
PBDEs(Nonabromodiphenyl ether)	IEC 62321	GC/MS	mg/kg	5	N.D.	---
PBDEs(Decabromodiphenyl ether)	IEC 62321	GC/MS	mg/kg	5	N.D.	---
The above-mentioned total of (PBDEs)	---	---	---	---	N.D.	1000

Notes :

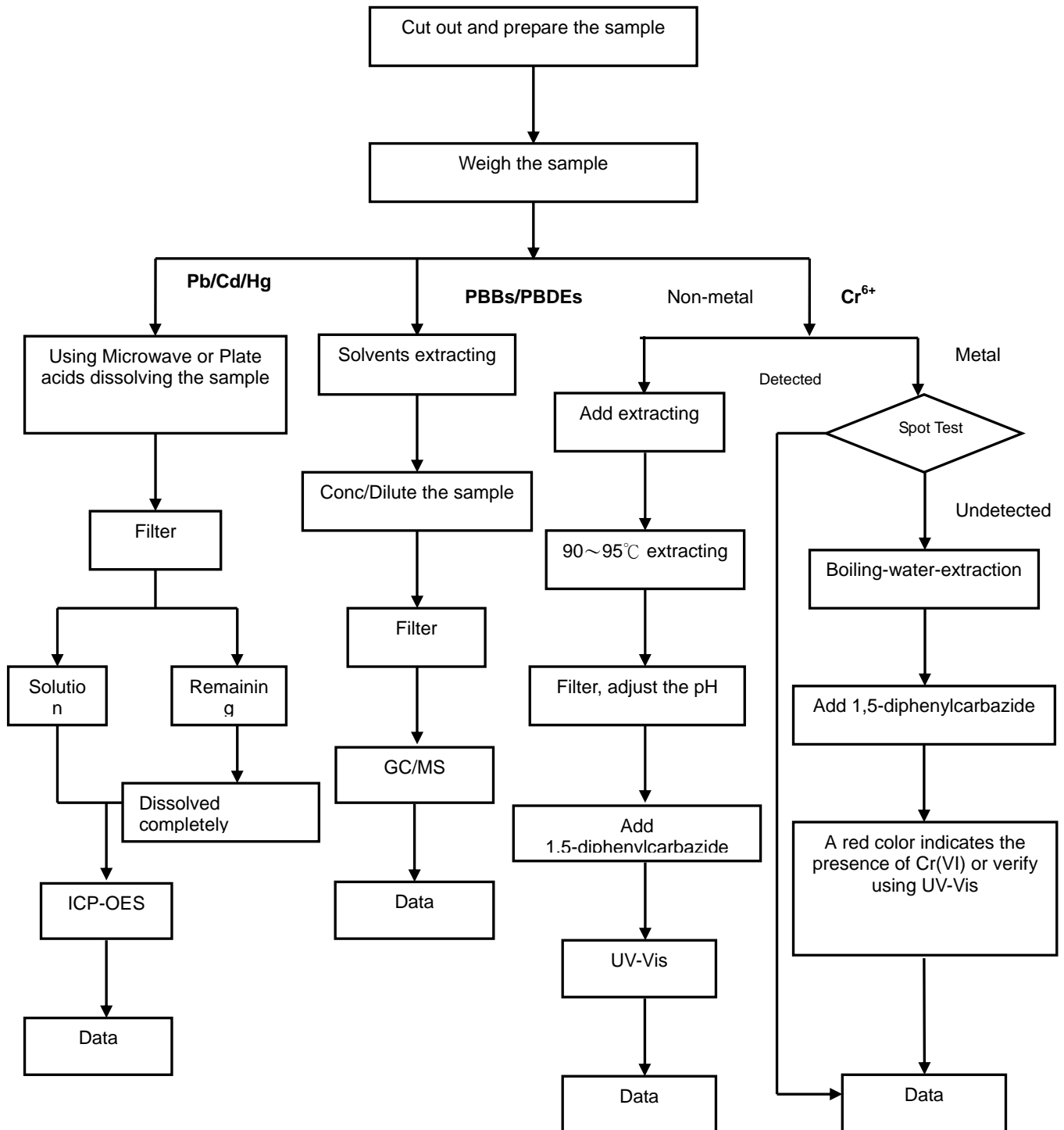
(1) N.D. = Not detected. (< MDL) If the clients required the result must be value(s), the value just for reference.

(2) MDL = Method Detection Limit

(3) "----" Show that there is not specification value.

2.2 MEASUREMENT FLOW CHART

Pb, Cd, Hg, Cr⁶⁺, PBBs, PBDEs : With reference to IEC 62321



-----End of Report-----